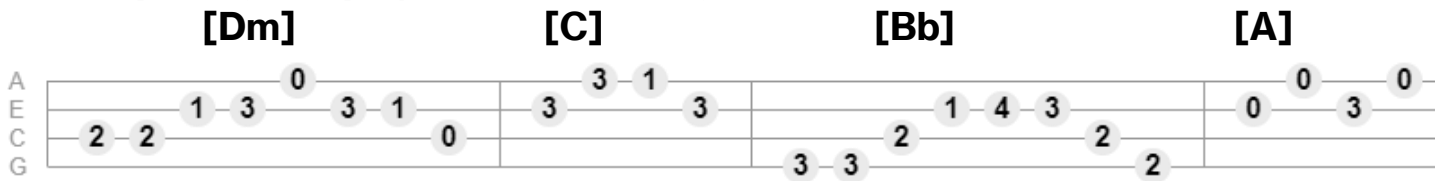


# Hazy Shade of Winter - Simon & Garfunkel/The Bangles

Opening riff- play 2x (low G String):



**(Bold even strum)**

[Dm] Time, time, time... See what's be [C] come of me.....  
While [Bb] I looked around  
For my possi [A] bilities...  
I was so [C] hard to please..... (tap, tap, tap,)

**(Extra bold strum)**

But look a- [Dm] round, leaves are [C] brown  
And the [Bb] sky, is a [A7] hazy shade of [Dm] winter

Hear the Salvation [C] Army band (1,2,3,4)  
[Bb] Down by the riverside, it's bound to be a better ride  
Than [Am] what you've got planned,  
Carry your [C] cup in your hand,

And look a- [Dm] round you, leaves are [C] brown now  
And the [Bb] sky  
Is a [A7] hazy shade of [Dm] winter

Hang on to your [C] hopes, my friend (1,2,3,4)  
[Bb] That's an easy thing to say, but if your hopes should pass away  
Then [Am] simply pretend  
That you can [C] build them again

Look a- [Dm] round, the grass is [C] high  
The fields are [Bb] ripe,  
It's the [A7] springtime of my [Dm] life (2,3,4, 1,2,3,4)

**Bridge:**

**[Bb]** Ahhhh... Seasons change with the **[F]** scenery,  
Weaving time in a **[C]** tapestry,  
Won't you stop and re- **[Dm]** mem- **[A7]** ber **[Dm]**me

**Repeat opening riff, X2:**

**[Dm]** **[C]** **[Bb]** **[A]**

**[Bb]** Funny how my memory slips while looking over manuscripts  
Of **[Am]** unpublished rhyme  
Drinking my **[C]** vodka and lime

I look a- **[Dm]** round,  
The leaves are **[C]** brown now  
And the **[Bb]**sky is a **[A7]** hazy shade of **[Dm]** winter

**Outro:**

Look a-**[C]** round, leaves are **[Bb]** brown  
There's a **[A7]** patch of snow on the **[Dm]** ground  
Look a-**[C]** round, leaves are **[Bb]** brown  
There's a **[A7]** patch of snow on the **[Dm]** ground  
Look a-**[C]** round, leaves are **[Bb]** brown  
There's a **[A7]** patch of snow on the **[Dm!]** ground